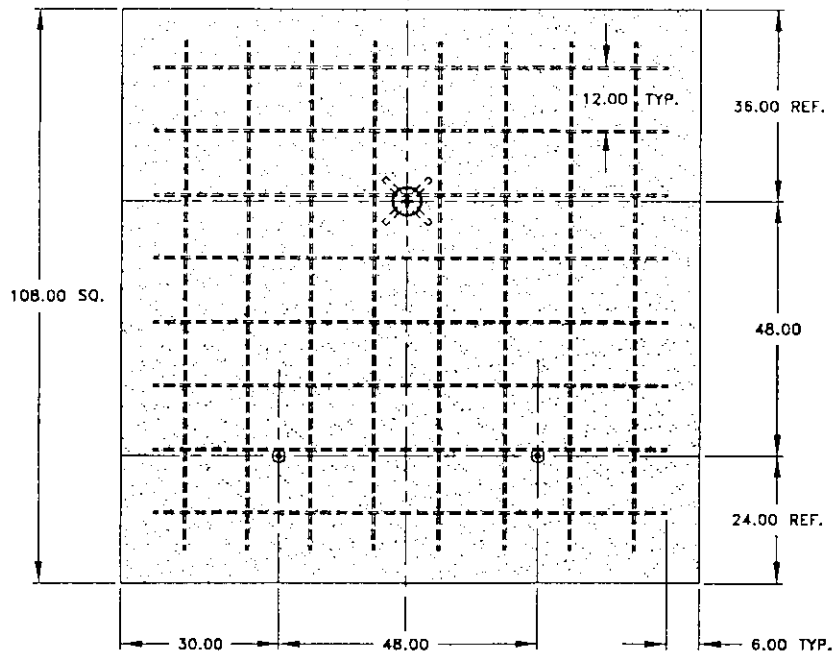


EQUATOR (SITES 25° - 70° LATITUDE)



PLAN VIEW

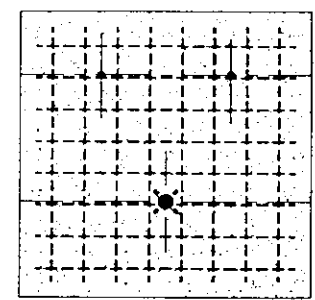
NOTES:

- 1 - FILL PIPE WITH CONCRETE.
- 2 - ITEM'S 1-3-4+9 SUPPLIED BY CUSTOMER.
- 3 - FOUNDATION TO BE IN ACCORDANCE WITH LOCAL BUILDING CODE.
- 4 - CONCRETE MUST MEET 28 DAY COMPRESSIVE STRENGTH OF 3000 PSI.
- 5 - FOUNDATION SLAB SHALL BE PLACED ON NON-ORGANIC, FIRM UNDISTURBED SOIL OR COMPACTED SAND/GRAVEL OR GRADED ROCK.
- 6 - G1 - FOR SITE LATITUDES FROM 25° TO 70°. G2 - (ROTATED 180°) FOR SITE LATITUDES FROM 0°-24°.

| ECN | DESCRIPTION | DATE | APP'D |
|-----|--------------|------|--------|
| C | ECN CAC-3509 | DLT | 6-9-97 |

(SITES 0° - 24° LATITUDE)

EQUATOR

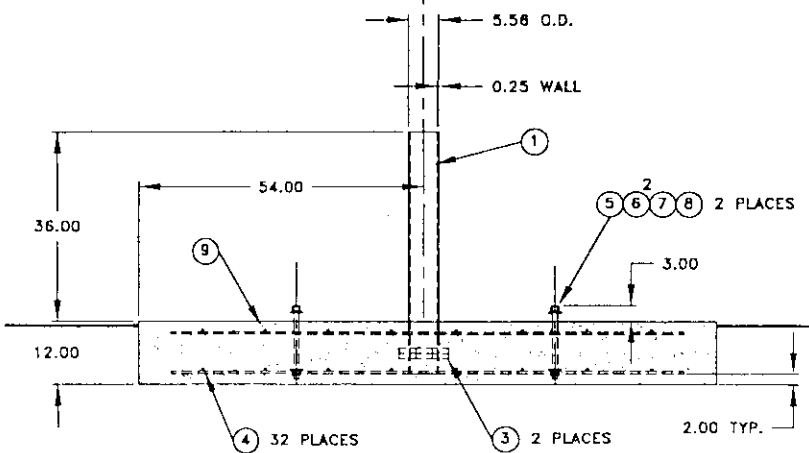


PLAN VIEW

DETAIL - G2

OPTIONAL SLAB FOUNDATION
NEW DESIGN
3.8M INCLINED & POLAR
120 MPH

G1 SHOWN



END VIEW

| 1 | 1 | 9 | COM'L | CONCRETE | 3 YARDS | | |
|----------|----------|------|-------------|------------------------|----------|----------------|-------|
| 2 | 2 | 8 | COM'L | LOCK WASHER 1" | STL HDG | A305 | |
| 2 | 2 | 7 | COM'L | FLAT WASHER 1" | STL HDG | A305 | |
| 4 | 4 | 6 | COM'L | HEX NUT 1-8 | STL HDG | A305 | |
| 2 | 2 | 5 | COM'L | THREADED ROD 1-8 X 14" | STL HDG | A305 | |
| 32 | 32 | 4 | COM'L | #5 REBAR X 96" | STL A305 | GRADE 40 | |
| 2 | 2 | 3 | COM'L | BAR 1" DIA X 12" | STL A-38 | | |
| - | - | 2 | - | - | - | - | - |
| 1 | 1 | 1 | COM'L | 5" PIPE (SCH 40) X 46" | STL A-38 | | |
| | | | | B27999-G2 | ASSEMBLY | (ROTATED 180°) | |
| | | | | B27999-G1 | ASSEMBLY | | |
| QTY REQD | QTY REQD | ITEM | PART NUMBER | DESCRIPTION | MATERIAL | SPECIFICATION | NOTES |
| G-2 | G-1 | | | | | | |

LIST OF MATERIAL

TOLERANCES
UNLESS OTHERWISE SPECIFIED:
ALL DIMENSIONS SHOWN ARE IN INCHES
X = ± .04 | FRAC = ± 1/64
XX = ± .03 | DEGREE = ± 3"
XXX = ± .01 | DEGREE = ± 3"
THIS DRAWING AND ITS SPECIFICATIONS ARE THE PROPERTY OF COMTECH ANTENNA SYSTEMS AND ARE NOT TO BE REPRODUCED OR COPIED WITHOUT WRITTEN PERMISSION.

COMTECH ANTENNA SYSTEMS
3100 COMMUNICATIONS ROAD
ST. LOUIS, FLORIDA 34786
(407)862-8111, FAX (407)865-3402

DRAWN BY: D. L. TOTH
DATE: 6-9-97
CHECKED: [Signature]
DATE: [Signature]
DATE: [Signature]
DATE: [Signature]
DATE: [Signature]

DRAWING NAME: **FOUNDATION OUTLINE**
3.8M - INCLINED & POLAR - 120 MPH
SCALE: 1=25
CODE IDENT NO: 24854
DRAWING NO: 827999
SHEET(S): 1 of 1
REV: C