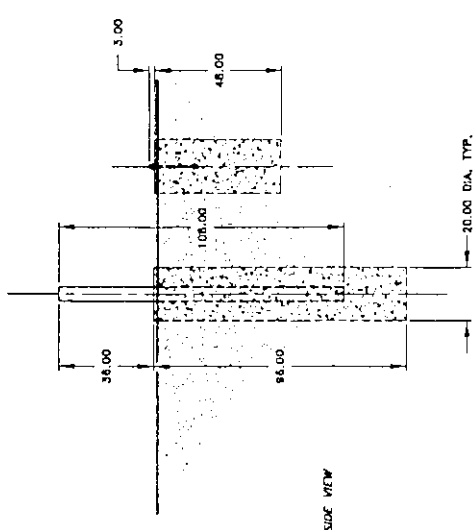
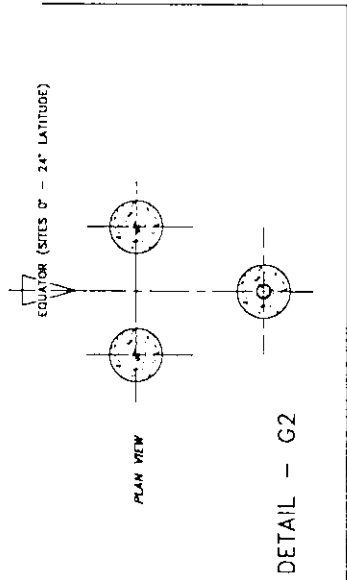
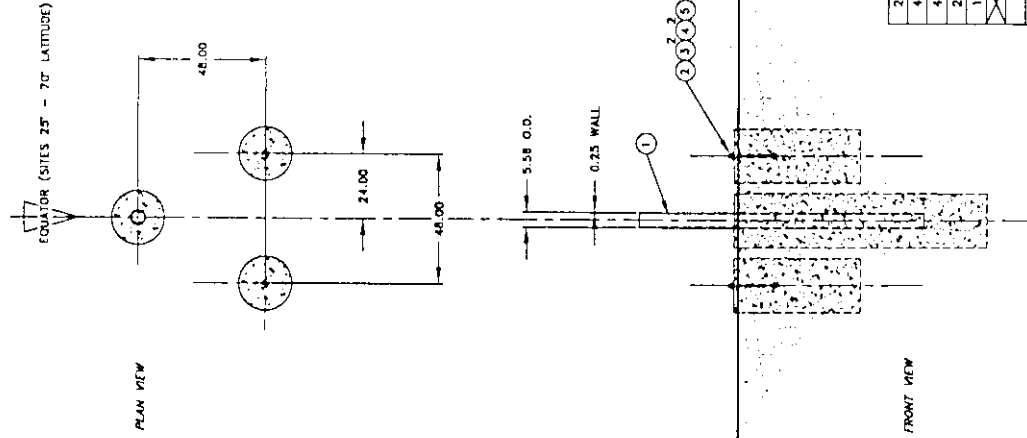


| | | | |
|-----|--------------|-------|--------|
| ECN | DESCRIPTION | DATE | APP'D |
| B | LCN CAC-3510 | D.L.T | 6-6-97 |

- NOTES:
- 1 - CONCRETE AND 5" PIPE SUPPLIED BY CUSTOMER.
 - 2 - CONCRETE MUST MEET 78 DAY COMPRESSIVE STRENGTH OF 3000 PSI.
 - 3 - FILL PIPE WITH CONCRETE.
 - 4 - FOUNDATION TO BE IN ACCORDANCE WITH LOCAL BUILDING CODE.
 - 5 - G1 - FOR SITE LATITUDES FROM 25° TO 70°.
 - 6 - G2 - (ROTATED 180°) FOR SITE LATITUDES FROM 0° TO 24°.

NEW DESIGN
3.8M INCLINED & POLAR
120 MPH



| QTY | ITEM | DESCRIPTION | MATERIAL | SPECIFICATION | NOTES |
|-----|------|-------------|----------|----------------|-------|
| 2 | 2 | COM'L | STL A-36 | A307 HDG | |
| 4 | 4 | COM'L | STL A-36 | A307 HDG | |
| 4 | 3 | COM'L | STL A-36 | A307 HDG | |
| 2 | 2 | COM'L | STL A-36 | A307 HDG | |
| 1 | 1 | COM'L | STL A-36 | A307 HDG | |
| | | B28007-G2 | | (ROTATED 180°) | |
| | | B28007-G1 | | | |

| QTY | RECD | PART NUMBER | DESCRIPTION | MATERIAL | SPECIFICATION | NOTES |
|-----|------|-------------|-------------|----------|---------------|-------|
| G-2 | | G-1 | | | | |

COMTECH ANTENNA SYSTEMS
 3100 COMMUNICATIONS ROAD
 ST. CLOUD, FLORIDA 34769
 (407)857-8111 FAX (407)857-3402

TOLENCES: UNLESS OTHERWISE SPECIFIED, ALL DIMENSIONS SHOWN ARE IN INCHES.
 X = ± .06 FRACTION = ± 1/64
 .XXX = ± .01 DEGREE = ± .5°
 THIS DRAWING AND ITS DIMENSIONS ARE THE PROPERTY OF COMTECH ANTENNA SYSTEMS AND ARE NOT TO BE REPRODUCED OR COPIED WITHOUT WRITTEN PERMISSION.

DATE: 6-9-97
 D.L.T. 10/11
 DRAWING NAME: FOUNDATION OUTLINE
 3.8M - INCLINED & POLAR - 120 MPH
 SCALE: 1=50
 CODE IDENT NO: 24854
 DRAWING NO: 828007
 SHEETS: 1 of 1
 REV: B

G1 SHOWN